

# Linx 7900E



## The perfect partner for your electronics product coding.

The Linx 7900E delivers a product coding solution specifically developed for the electronics market. Combined with Linx Black ink 1085 – which is chromium and halogen free – the Linx 7900E provides a reliable and compliant coding solution for a wide range of electronics coding applications.

## Meets stringent composition requirements

Linx Black ink 1085, is both chromium and halogen-free and suitable for use in applications where stringent requirements are made on the heavy metal and halogen content of products.

## Improves traceability

Linx Black ink 1085 ink resists alcohol, so coding can take place either before or after an alcohol wash. It also has excellent adhesion to coated and uncoated PCB, ceramics, metals and a wide range of plastics.

## Quick and simple code setup

- QuickSwitch® Plus software allows simple and accurate code changes using a barcode scanner
- PrintSync® automatic print format selection – assigns the best message type for optimum print quality
- Linx Insight® enables remote monitoring from a smart phone, plus message download and control from a PC.

## Lowest running costs

- 18 month warranty on printer from installation at no extra cost
- Mistake-free message editing is provided by customisable on-screen prompts, to reduce coding errors.

## Comprehensive range of printing formats

- Prints up to 4 lines of text, logos, barcodes and 2D Data Matrix codes
- Rotated character 'tower printing'; dynamic reverse and invert printing for traversing lines
- Micro printhead allows print as small as 1.1mm high – for coding onto even the smallest of components.

## Increased production uptime

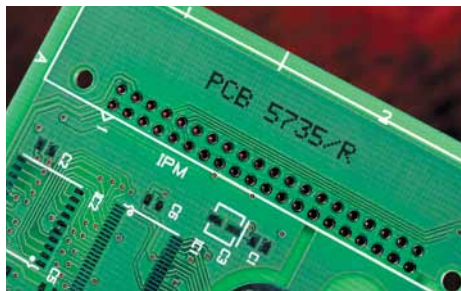
- FullFlush® system automatically cleans and dries the printhead and conduit at every shutdown
- SureFill® enables fast, mistake-free refills, everytime.

## Easily integrates on to any production line

- Robust printhead which works reliably in static and moving printhead applications
- Ethernet port for easy connectivity to the web or factory systems
- RS232 connectivity for line integration
- Connectivity for two product detectors and shaft encoder, for easy installation with conveyors and other equipment.

## QuickSwitch Plus

- Automated code set up using a barcode scanner, or data from a PC or PLC
- Automatically selects a message, edits message content and sets print parameters such as print orientation, height and width, and position on pack
- Sets date offset
- Reduce your coding errors and speed up product changeovers.



THINKING ALONG YOUR LINES

# Linx 7900E

## Dimensions (mm)

Top Elevation



Front Elevation



Side Elevation



Printhead



## Print speeds and printhead options

Printhead	Micro
Lines of print supported	1,2,3 or 4
Character height range	1.1 to 8.0mm
Maximum speed: single line print, wide pitch, High Performance print option included	8.41 m/s
Maximum number of characters per second	2222

## General features

- Single button startup and shutdown
- Simple menu-driven WYSIWYG message creation and editing
- SureFill® mistake-proof refill system and on-screen fluid level indicators
- Integral QWERTY keyboard (full size) and 1/4 VGA back-lit colour display, printer status indicators (4 LEDs)
- USB port for copy and back up of message and printer settings
- FullFlush® automatic printhead and conduit flush
- Saving remote field data over a power cycle
- Linx Insight® remote printer control and status view
- Auto power-off
- Automatic diagnostics
- Multiple operator languages (user selectable)
- Password-protected functions
- Dynamic message and logo storage capacity
- Prompted fields
- QuickSwitch Plus automated code setup software
- PrintSync print format selection software
- Print History log

## Programming and printing facilities

- Fixed and variable text
- Upper and lower case characters
- Graphics/logo printing
- Logo creation and editing, on-screen
- QuickSwitch® message selection and editing using bar code scanner
- Bar codes EAN 8, EAN 13, 2 of 5, ITF, Code 39, Code 128, UPC-A, GS1 128 linear barcode
- Data Matrix 2D codes
- Bold factor (up to 10 times)
- Height, width and delay functions for easy code sizing and positioning
- Standard and user-definable formats for shift coding
- Remote communications interface
- Real-time clock functions
- Automatic date forward function
- Batch coding and counting
- Sequential numbering and messages
- Dynamic reverse and invert printing for traversing lines
- Rotated character ('tower') printing
- Message creation/editing whilst printing
- Timed-message function
- Flexible print trigger options
- LogoJet PC-based message and logo creation software

## Printhead options

- 2m conduit
- 4m conduit
- Positive air purge to printhead
- Cutaway printhead cover tube
- Magnetic shielded cover tube

## Connections/interfacing for

- Shaft encoder
- Primary and secondary product detectors
- External single stage alarm output
- USB
- RS232
- Ethernet
- External multi-stage alarm output
- Parallel I/O
- Multiple printer triggering from single product detector/shaft encoder
- Volt-free contact alarm connection (e.g. for use with external mains-driven alarm)

## Physical characteristics

Base and enclosure	Stainless steel
IP55 environmental protection rating**	•
Mounting options	Bench or console
Operating temperature range	5 – 45°C (FG: 0 – 40°C)
Humidity range (r.h., non-condensing)	90% max
Power supply	100-230V, 50/60Hz
Power consumption	60W (typical when printing)
Power rating	200W
Weight	21kg

## Regulatory approvals

- GS
- CE
- GOST R
- NRTL
- FCC

Key • standard ○ option \*\*Independently verified – certificates available on request

www.linxglobal.com



THINKING ALONG YOUR LINES



For more information, contact Linx Printing Technologies Ltd, Linx House, 8 Stocks Bridge Way, Compass Point Business Park, St Ives, Cambs PE27 5JL, UK. Telephone +44 (0)1480 302100 Fax +44 (0)1480 302116 email sales@linx.co.uk www.linxglobal.com

Linx, SureFill, QuickSwitch, FullFlush, Linx Insight, PrintSync and Logojet are registered trademarks of Linx Printing Technologies Ltd. © Linx Printing Technologies Ltd 2015.