



Linx 8920

Continuous ink jet printers

Code more information, and on faster lines, with the Linx 8920.

The Linx 8920 CIJ printer provides flexible coding with up to 6 lines of print across a wide range of production line speeds, and with fewer maintenance interventions than other CIJ printers. With a simple, touch screen interface, and unique on-screen system monitoring with extended service intervals, the Linx 8920 is designed to make your coding life easier.

Easy to use for quick code setup and operation

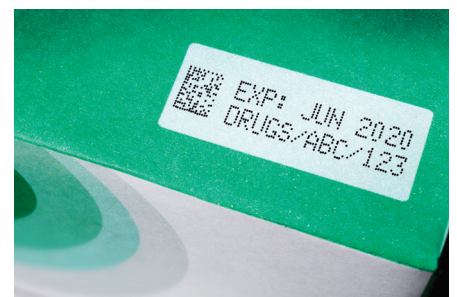
- Store up to 50 named line settings – for quick retrieval at product changeovers; settings can be transferred between printers with a USB flash drive
- Large, icon-driven high-resolution touch screen, with at-a-glance production-rate visibility
- Customisable top screen, one touch operation for common tasks, on-screen message prompts for faster, accurate code setup
- Simple, one-touch, fluid cartridge refills during printing – no mess, no tools, no mistakes
- Self-service with an on-screen Wizard which guides operators through the service module change process – for a quick, engineer-free service.

Reliable coding for longer

- Extended service module change intervals up to 18,000hrs/24 months – code for longer without interventions
- Advanced System Monitoring – internal monitoring helps to avoid unscheduled stoppages between service module changes – reliable coding for longer
- Quick, clean startups every time – robust, completely sealed printhead, and Autoflush feature ensure continual reliable operation
- Seasonal shutdown mode – printer is ready to print first time, even after extended shutdown, with no need for expensive printer flushing.

Flexible coding with more printing capabilities

- Linx Printernet enabled – remote monitoring and control of Linx 8900 printers via a secure, cloud-based service
- Code up to six lines of code, including 2D barcodes
- Coding at faster line speeds as standard – up to 7.28m/s for one line of code
- Carton coding option, up to 20mm high print
- Sequential text and flexible sequential number printing
- Real-time output on screen – meet your OEE targets with the printer screensaver 'On/Off target'.



Linx 8920

PRINTHEAD

60mm minimum bend radius in static applications. 180mm minimum bend radius in dynamic applications.



SIDE ELEVATION



FRONT ELEVATION



90° PRINTHEAD OPTION



Technical Specifications

PRINT SPEEDS AND SIZES

Printhead:	Mk11 Midi	Mk11 Midi plus
Nozzle size:	62 µm	75 µm
Lines of print:	Up to 6	Up to 6
Character height range:	1.8 to 20 mm	2.1 to 20 mm
Maximum speed for single line print (5 dot high characters):	6.25 m/s (0.47 mm drop pitch)	7.28 m/s (0.57 mm drop pitch)
Maximum speed for two line print (7 dot high characters):	2.46 m/s (0.43 mm drop pitch)	2.38 m/s (0.52 mm drop pitch)
Recommended distance from printhead to substrate:	12mm (35mm for carton coding message style)	20mm (45mm for carton coding message style)

HARDWARE FEATURES

Easi-Change® Service Module, change interval: up to 24 months (18,000 hours) – dye-based inks, up to 12 months (6,000 hours) – soft pigmented inks*

Unique automatic printhead flushing: typical cleaning interval 3 months (100 starts and stops) – dye-based inks, up to 1 month – soft pigmented inks

Printhead jet-speed control and temperature sensing for consistent printing in changing ambient temperatures

Mistake-proof, mess-free ink and solvent refilling while printing (0.5 litre ink cartridge, 1 litre solvent cartridge)

10-inch full colour touch screen with tough, solvent-resistant polymer cover

Durable ink pump with no scheduled changes required

Extended shutdowns (up to 3 months) without printer flushing or draining

Robust, flexible dual-tube conduit for static and moving printhead applications

SOFTWARE FEATURES

Single-press start print, pause print and jet shutdown

Auto power-off after jet shutdown

Simple message creation and editing with drag-and-drop field positioning, zoom function and insert mode for long messages

Total print count, message count and batch count

Message store display and message style selection

Password-protected functions, with customisable user profiles

Message creation/editing while printing

On-screen output rate measurement and production stoppage log. Downloadable onto USB

On-screen fluid level indicators, 12 hour running from fluid refill warning to printer stop in most applications

On-screen help and diagnostics information

PrintSync® automatic font and message format selection, based on message style selected and production line speed

Multiple operator languages (user selectable) with on-screen keyboards, secondary keyboard for multi-language printing

Simple line speed and shaft encoder setup wizard, for installation on new production lines

Up to 50 line settings can be stored, with individual line names

Message store and printer settings backup, copy and restore using USB storage device

Simple Communications Protocol (YAML based scripts) and Linx Remote Communications Interface for connection to PCs or PLCs using Ethernet port or optional RS232 port

QuickSwitch® message selection and editing using bar code scanner

MESSAGE PRINTING FACILITIES

Text, symbols and numbers

Prompted fields for one-step message editing with customisable on-screen prompts

Height, width and delay functions for easy code sizing and positioning

Automatic formats for printing dates, times and date rounding (using the printer's internal clock)

Custom date and time editor to create different date formats as required

Automatic date forward function. Add number of seconds, minutes, hours to the current time, or number of days, weeks or months to the current date

Automatic time adjustment option for daylight savings time

Sequential numbering, forward and backward counting, variable intervals, multiple number ranges, alphanumeric sequencing

One touch sequential number reset option from the printer screen, and reset using external trigger

Sequential text fields, increment and reset sequences using external triggers, optional one touch sequence reset from the printer screen

'Production Schedule' function, to print a sequence of messages automatically, with different triggering and repeat print options

Number of messages stored: up to 1000 using internal printer memory (depending on message content), more can be stored using a USB storage device

Bold character printing (up to 9 times)

Variable character spacing and inverse image printing, for improved readability and vision system recognition

Rotated character (tower) printing

Shift coding (message content changes automatically at defined times)

Graphics and logos can be imported into the printer as bitmap files using the USB port

Reverse and inverted printing

Barcodes (ITF 2 of 5, Code 39, Code 128, EAN 13, EAN 8, UPCA, Pharmacode, Data Matrix, QR Code, RM4SCC-Type C)

PRINTHEAD

2m conduit

4m conduit (option)

6m conduit (option)

90° printhead (option)

Positive air purge to printhead (provides improved reliability in dusty or humid environments) (option)

Air dryer (provides improved reliability for certain inks at high humidity and temperature) (option)

Active Airflow Control (8920 factory fit option) for lower solvent consumption and reduced emissions. Reduces consumption by up to 40% (ink and application dependent, 2m or 4m conduits)

INK RANGE

Linx MEK base (dye-based, soft pigmented-based)

Linx mixed base (MEK-free, dye based)

Linx ethanol base (MEK-free, dye based)

CONNECTIONS/INTERFACING FOR

Product detector

Shaft encoder/second product detector

External single-stage alarm output (24v) with multi-stage alarm option

USB – for message backup and transfer, and wifi connection for Linx Printernet

Ethernet

Volt-free contact alarm connection (e.g. for use with external mains-driven alarm) (option)

Dual alarm output (Volt-free and 24V output) (option)

RS232 (option) and Parallel I/O (option)

PHYSICAL CHARACTERISTICS

Base and enclosure: Stainless steel

IP55 environmental protection rating**

Mounting options: Static stand, mobile stand, bench, shelf for wall mounting

Operating temperature range: 0 – 50°C for 1240, 1010, 1014 and 3240 ink types, (5-45°C for other MEK base, Mixed base, Ethanol base ink types)

Humidity range (r.h., non-condensing): 90% max

Power supply: 100-230V, 50/60Hz

Power consumption: 38W (typical when printing)

Power rating: 150 W

Weight: 24.5kg (including fluids and printhead)

REGULATORY APPROVALS

• GS • CE • EAC • UL • CAN/CSA • FCC

*Interval may be adjusted in certain environments and applications to provide reliable running between service module changes

**IP rating is independently verified – certificates available on request



For more information, contact Linx Printing Technologies Ltd, Linx House, 8 Stocks Bridge Way, Compass Point Business Park, St Ives, Cambs, PE27 5JL, UK.

Telephone +44 (0)1480 302100 Email sales@linxglobal.com Website www.linxglobal.com

Linx and Easi-Change are registered trademarks of Linx Printing Technologies Ltd.

© Linx Printing Technologies Ltd 2021