

Linx Contrasting Inks



The Linx range of contrasting inks, for Continuous Ink Jet printers, deliver vivid codes, in a variety of colours, across a range of substrates including rubbers, plastics and metals.

These pigmented inks are MEK based and offer excellent light-fastness (for products stored or used outside), heat and chemical splash resistance. They are used extensively in cabling and pipe extrusion, auto and aero parts marking, electronics as well as packaging.

Some Linx contrasting inks require the Spectrum variant of ink jet printer.



■ Black pigmented 1009

A dense black ink giving good colour contrast especially on plasticised and unplasticised PVC.



■ Blue pigmented 1033

Good colour contrast on light coloured substrates, especially PVC, ideal for cable and pipe extrusions.



■ Yellow pigmented 1039

Good colour contrast on dark coloured contrasts across a range of substrates, especially PVC. Suitable for electronic components, rubber mouldings and jar enclosures.



■ Opaque blue 1043

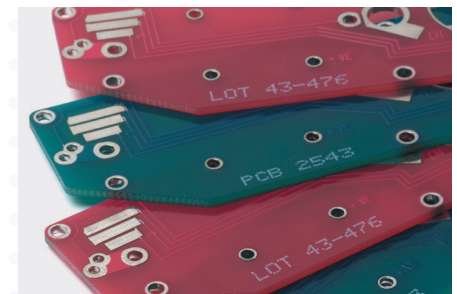
Good contrast on dark and light coloured substrates, ideal for cabling and pipe extrusions as well as building and packaging materials.

- Black pigmented 1009
- Blue pigmented 1033
- Yellow pigmented 1039
- Opaque blue 1043
- Blue pigmented 1053
- White pigmented 1059
- White pigmented 1069
- Yellow pigmented 1079
- Yellow bottling 1088
- Brilliant white 1305
- Brilliant white 1306
- High-opacity grey 1310
- High-opacity grey 1311
- Brilliant white 1316
- White cable ink 1320



■ Blue pigmented 1053

A lighter blue ink than 1043 but with a wider adhesion profile, including glass, metal and plastic, especially PVC.



□ White pigmented 1059

Good contrast on black or other dark coloured materials, resists migration and transfer, and is particularly suited to coding onto plastics, especially PVC.



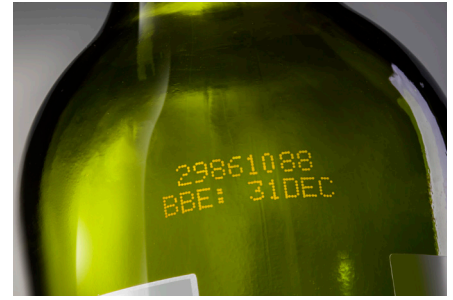
☐ White pigmented 1069

A heavily pigmented ink with opaque white print for excellent contrast and legibility on black or other dark coloured materials. Resistant to migration and transfer, and to solvents. Excellent performance with most plastics (including PVC and PE) and glass.



☒ Yellow pigmented 1079

Good colour contrast on dark coloured substrates, with a wider adhesion profile than 1039, including glass.



☒ Yellow bottling 1088

Yellow opaque colour. Specifically formulated for printing onto returnable glass bottles used in the beverage industry which are usually returned and cleaned in a caustic wash process before refilling and printing.



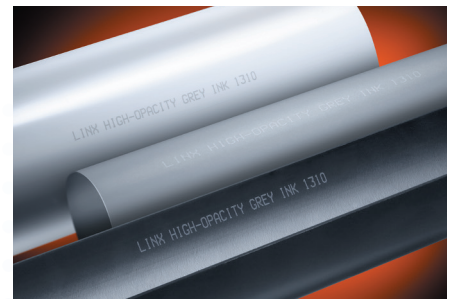
☐ Brilliant white 1305

A heavily pigmented ink that gives a highly opaque white print for excellent contrast and legibility on dark coloured substrates. It withstands a high level of heat, light and solvent and is suitable for a range of specialist applications, including plastic but particularly PE.



☐ Brilliant white 1306

A heavily pigmented ink with highly opaque print on dark substrates. It resists a high level of heat, light and solvent, and is faster drying than 1305. Particularly good on plastics.



☒ High-opacity grey 1310

A heavily pigmented ink with outstanding opacity and contrast on any colour of substrate, including grey. Good performance across a range of materials, including PVC.



☒ High-opacity grey 1311

A heavily pigmented ink with outstanding opacity and contrast on any colour of substrate, including grey. Good performance across a range of materials, including PVC. Faster drying than 1310.



☐ Brilliant white 1316

A heavily pigmented ink with outstanding clarity on dark coloured substrates, including PE. Can be used with the Linx Midi and Ultima printheads, offering a smaller size of code.



☐ White cable ink 1320

A heavily pigmented ink with outstanding clarity on dark coloured substrates. Offers excellent adhesion to all types of PE making it particularly suitable for cable.

INK FEATURES	RECOMMENDED LINX SOLVENT	PRINTER COMPATABILITY	DRYING TIME	ORDERING PACK OPTIONS			
				5 LITRE	1 LITRE	EASIPACK	COMBIPACK (7900 SERIES ONLY)
Black pigmented 1009	1505	8000 Series, 7900 Series	1-2 seconds	✓	✓	✓	✓
Blue pigmented 1033	1505	8000 Series, 7900 Series	1-2 seconds	✓	✓	✓	✓
Yellow pigmented 1039	1505	8000 Series, 7900 Series	1-2 seconds	✓	✓	✓	✓
Opaque blue 1043	1505	8000 Series Spectrum, 7900 Spectrum	1-2 seconds	✓	✓	X	✓
Blue pigmented 1053	1505	8000 Series Spectrum, 7900 Spectrum	1-2 seconds	✓	✓	✓	✓
White pigmented 1059	1505	8000 Series Spectrum, 7900 Spectrum	1-2 seconds	✓	✓	✓	✓
White pigmented 1069	1505	8000 Series Spectrum, 7900 Spectrum	1-2 seconds	✓	✓	✓	✓
Yellow pigmented 1079	1505	8000 Series, 7900 Series	1-2 seconds	✓	✓	✓	✓
Yellow bottling 1088	1588	8000 Series	1-2 seconds	✓	✓	✓	X
Brilliant white 1305	1605	8000 Series Spectrum, 7900 Spectrum	5-9 seconds	✓	✓	✓	✓
Brilliant white 1306	1606	8000 Series Spectrum, 7900 Spectrum	3-5 seconds	✓	✓	✓	✓
High-opacity grey 1310	1605	8000 Series Spectrum, 7900 Spectrum	5-9 seconds	✓	✓	✓	✓
High-opacity grey 1311	1606	8000 Series Spectrum, 7900 Spectrum	3-5 seconds	✓	✓	✓	✓
Brilliant white 1316	1606	8000 Series, 7900 Series	3-5 seconds	✓	✓	✓	✓
White cable ink 1320	1530	8000 Series Spectrum, 7900 Spectrum	3-5 seconds	✓	✓	✓	✓

Quality assurance

It is always recommended that only Linx continuous ink jet inks and solvents are used in Linx printers, as substitutes can affect printer performance or cause printer failure

Linx inks and solvents are formulated specifically for use in Linx printers to ensure performance and reliability

They are manufactured to certified and verifiable ISO 9001 and ISO 14001 quality and environmental procedures

All raw materials are screened and audited to comply with new legislation to ensure a continuously safe and legal supply

Ink handling guidelines

Linx takes great care to minimize any toxicity or environmental impact of their inks.

Details of safety precautions for handling these fluids can be found on the relevant Safety Data Sheets.

Ordering options for Linx inks and solvents

For 7900 Series printers:
order bottles

For 8000 Series printers:
order cartridges

Standard 5 litre packs
(10 x 0.5 litre bottles or cartridges of either ink or solvent) for customers requiring at least 5 litres of ink per year

1L packs
(2 x 0.5 litre bottles or cartridges of ink) for customers using less than 2 litres of ink per year

EasiPacks
(10 x 0.5 litre bottles or cartridges of ink in 1 litre packs)
for customers requiring the flexibility to subdivide a 5 litre box

Combipacks
(4 x 0.5 litre bottles of ink and 6 x 0.5 litre bottles of matching solvent)
for customers requiring less than 5 litres of ink per year

Ink and solvent storage and use

Storage:
Between +15°C and +25°C

Operating temperature:
Between +5°C and +45°C

Ink overviews

For advice on individual applications or for a full profile of each ink including printer compatibility, please consult Linx or your local Linx Distributor.