

# Linx Special Adherence Inks



The Linx range of special adherence inks for CIJ printers addresses the needs of applications where production processes may challenge the adherence or durability of other inks.



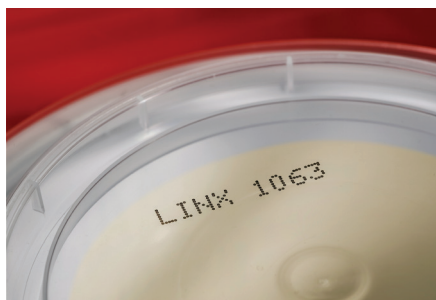
## ■ Black strong plastic-film 1015 and 3415

Ideal for thin flexible plastic wrapping and pouches of PP, BOPP, HDPE and LDPE where code adhesion is a problem. Fluids are non-CMR, and 3415 ink and 3915 solvent are MEK-free.



## ■ Black oil-penetrating 1062

Prints effectively through light layers of oil onto plastics, metal, glass and waxy surfaces including OPP. Good for both food and light engineering applications.



## ■ Black grease-penetrating 1063

Excellent adhesion and contrast on substrates with a light oily or greasy film, e.g flexible food packaging containers, or where the code will be exposed to oil later in the process.



## ■ Black dry glass 1065

Provides outstanding adhesion, legibility and rub resistance on dry glass and PET. Ideal for fast-moving food processing environments.



## ■ Black bottling 1068

Fast drying ink that provides improved code legibility specifically on glass, with superior adhesion performance after ice water immersion and refrigeration. Codes are removable for returnable glass bottles.



## ■ Yellow bottling 1088

Yellow opaque colour. Specifically formulated for printing onto returnable glass bottles used in the beverage industry which are usually returned and cleaned in a caustic wash process before refilling and printing.



## ■ Thermochochomic Purple to Pink 1281

Shows a permanent colour change when exposed to harsh sterilisation conditions. A robust ink suitable for coding in retort applications where cans and plastics are cooked



## ■ Black food-packaging 2250

Alcohol-based ink with a low odour which adheres well to a range of substrates, including most plastics. Ketone and chromium-free it also meets USDA requirements for incidental contact with meat and poultry.

INK FEATURES	RECOMMENDED LINX SOLVENT	INK / SOLVENT BASE	DRYING TIME	ORDERING PACK OPTIONS			
				5 LITRE	1 LITRE	EASIPACK	COMBIPACK (7900 SERIES ONLY)
<b>Black strong plastic-film 1015</b>	1515	MEK	1-3 seconds	✓	✓	✓	X
<b>Black oil-penetrating 1062</b>	1505	MEK	1-2 seconds	✓	✓	X	X
<b>Black grease-penetrating 1063</b>	1563	MEK	1-2 seconds	✓	✓	✓	X
<b>Black dry glass 1065</b>	1565	MEK	1-2 seconds	✓	✓	✓	✓
<b>Black bottling 1068</b>	1590	MEK	1-2 seconds	✓	✓	✓	X
<b>Yellow bottling 1088</b>	1588	MEK	1-2 seconds	✓	✓	✓	X
<b>Thermochromic Purple to Pink 1281</b>	1545	MEK	2-4 seconds	✓	✓	✓	✓
<b>Black food-packaging 2250</b>	2750 or 2502	Ethanol	2-4 seconds	✓	✓	X	✓
<b>Black strong plastic-film 3415</b>	3915	Ethyl acetate and acetone	1-2.5 seconds	✓	✓	✓	X

## Quality assurance

It is always recommended that only Linx continuous ink jet inks and solvents are used in Linx printers, as substitutes can affect printer performance or cause printer failure

Linx inks and solvents are formulated specifically for use in Linx printers to ensure performance and reliability

They are manufactured to certified and verifiable ISO 9001 and ISO 14001 quality and environmental procedures

All raw materials are screened and audited to comply with new legislation to ensure a continuously safe and legal supply

## Ink handling guidelines

Linx takes great care to minimise any toxicity or environmental impact of their inks.

Details of safety precautions for handling these fluids can be found on the relevant Safety Data Sheets.

## Ordering options for Linx inks and solvents

**For 7900 Series printers:**  
order bottles

**For 8000 Series printers:**  
order cartridges

Standard 5 litre packs  
(For 7900 printers 10 x 0.5 litre bottles of ink or solvent. For 8000 printers 10 x 0.5 litre cartridges of ink or 5 x 5 litre cartridges of solvent) for customers requiring at least 5 litres of ink per year

1L packs  
(2 x 0.5 litre bottles or cartridges of ink) for customers using less than 2 litres of ink per year

EasiPacks  
(10 x 0.5 litre bottles or cartridges of ink in 1 litre packs) for customers requiring the flexibility to subdivide a 5 litre box

Combipacks  
(4 x 0.5 litre bottles of ink and 6 x 0.5 litre bottles of matching solvent) for customers requiring less than 5 litres of ink per year

## Ink and solvent storage and use

Storage:  
Between +15°C and +25°C

Operating temperature:  
Between +5°C and +45°C

## Ink overviews

For advice on individual applications or for a full profile of each ink including printer compatibility, please consult Linx or your local Linx Distributor.