



# Linx PrinterNet®

Always connected to your coding



Monitor and control your coding and marking anytime, anywhere with Linx PrinterNet



Anytime, anywhere

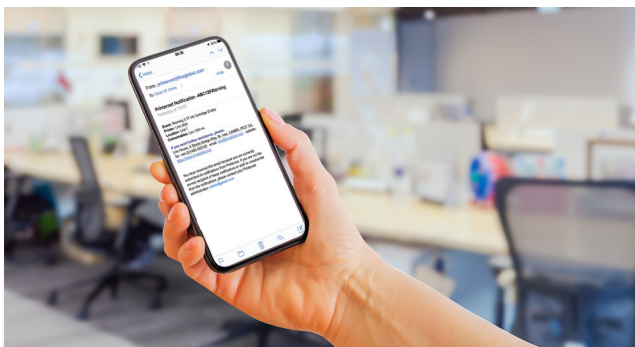
### Use Linx PrinterNet on any mobile device

View the PrinterNet dashboard and receive alerts from your printers to your phone, tablet, laptop or desktop PC. No need to walk the line.

Manage messages remotely

### PrinterNet message store

Set up and manage print messages remotely, to avoid operators selecting the wrong message at the printer. View the messages available on your printer and view message history.



Never miss an alert

### Customisable alerts

Set up email alerts of warnings such as low fluids, user logins or line-stop problems, to make sure that production doesn't stop because your printer needs attention.



Be in the know

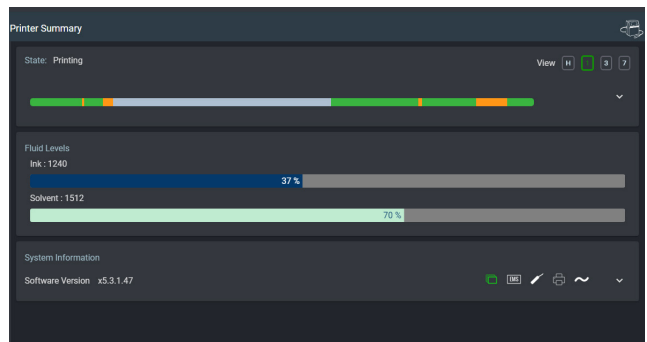
### Monitor the status of your printers

Remotely check which machines are printing, check the right messages are being printed, who has made changes and see the print count.

Fast recovery

### Backup and Restore

Keep a master copy of approved messages and printer settings securely in the cloud, enabling you to quickly restore your machine from unapproved changes.



Maximise uptime

### Monitor printer health

Review fault history and monitor printer and production line uptime to help you plan your regular maintenance without impacting production.



Efficient changeovers

### Targets and KPIs

View current progress of your production jobs against target end times or print rates, so you can optimise changeovers. Set your own KPIs in PrinterNet and monitor your production against your targets.

Upgrade, on your schedule

### Remote upgrade

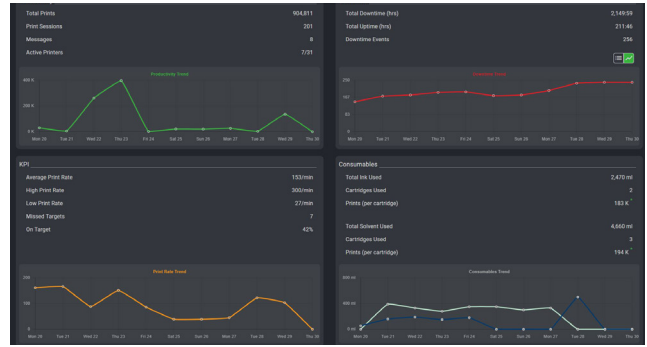
Always have access to the latest printer and security features with remote software upgrades. With no need for an engineer visit, you can decide when to run the upgrade, for the least disruption to your line.



Help when you need it

### Linx support

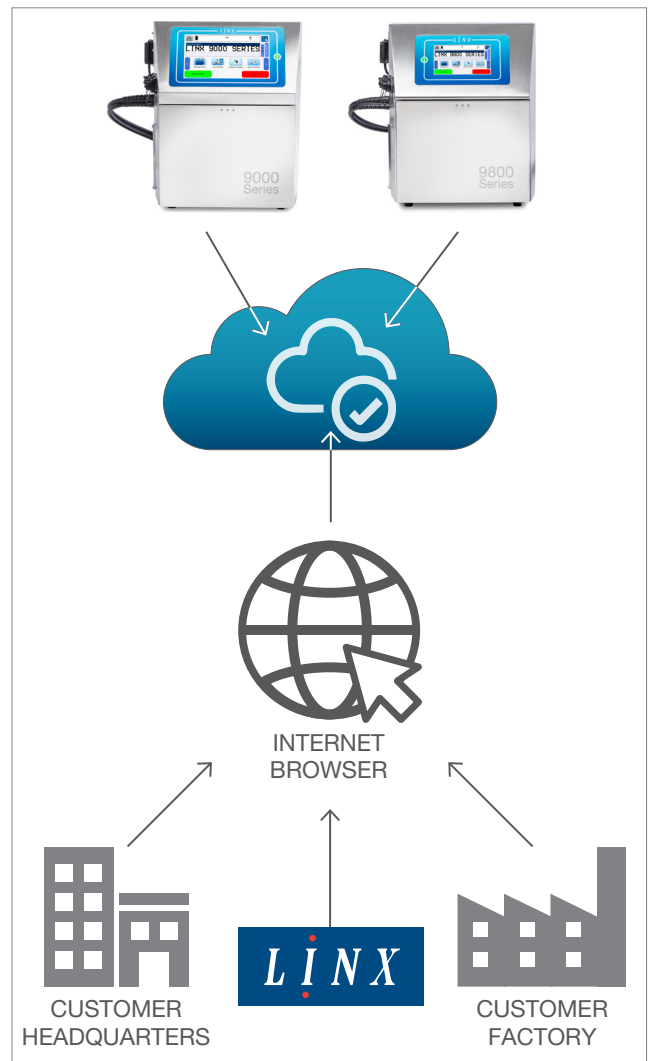
Our Technical Support team can analyse data collected by PrinterNet, to diagnose problems and help fix issues, advise on preventative maintenance or provide diagnostics prior to an engineer visit.



Data for continuous improvement

### Production Line insights

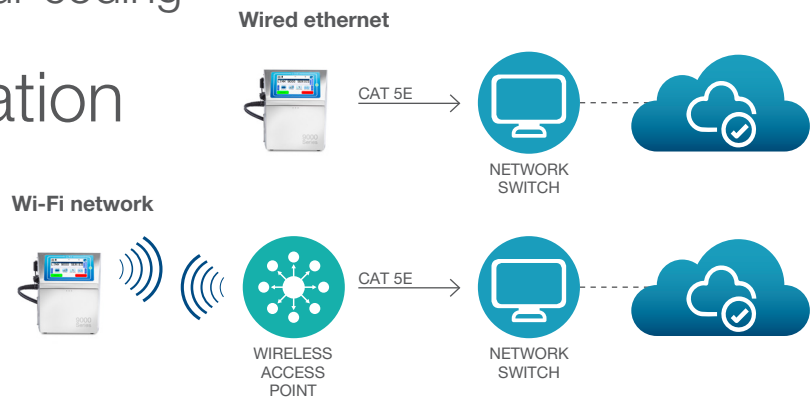
Review historic production line performance data to help you plan and support your continuous improvement; line running time and duration, number and duration of any line stop events, consumables usage, number of products processed and performance against KPIs.



# Linx PrinterNet<sup>®</sup>

Always connected to your coding

## Technical Information



<b>COMPATIBLE LINX PRINTERS</b>	9900 Series, 9800 Series, 8900 Series, 8800 Series
<b>CONNECTION OPTIONS</b>	Wi-Fi (through dongle or signal within range)
	Ethernet
	IP addressing is also optional and can use either fixed IP addressing or DHCP (Dynamic Host Configuration Protocol). With Wi-Fi an SSID (Service Set Identifier) and network password will be required.
<b>NETWORK SECURITY</b>	Linx printer can only connect to the Linx PrinterNet cloud and will never accept connection requests from any other device or service. Linx printers are configured to refuse external connection requests and can only be used to initiate and manage connectivity with Linx PrinterNet.
	You stay in full control of which users have access to your data and which features they are able to use. The customer is responsible for maintaining user logins.
<b>DATA TRANSFER</b>	Linx PrinterNet will attempt to upload data to the cloud every few seconds as needed. The amount of data will depend on the number of printers and plant activity.
	If you allow Linx technical support to take control of your printer to help resolve a problem, then the data volume may increase for the period of the session.
	Linx PrinterNet uses port 443 (standard for any https website) for outbound communications and WebSockets protocol (RFC 6455). No additional open ports are required. Data is encrypted using TLS protocol during transmission. In most cases there is no need to modify the firewall settings of your company's network.
<b>DATA STORAGE</b>	Linx PrinterNet is hosted by AWS (Amazon Web Services <sup>®</sup> ). They host data and services for startups and larger companies in over 190 countries worldwide. Linx data will be stored in the geographic location that will deliver the best performance to the customers.
	The majority of the data stored is technical printer information, which will be used for diagnosis and prediction of errors, determination of trends, research and development, provision of services to customers.
	The customer can choose to block the transfer of data about the specific codes they are printing. The only personally identifiable data stored, is that required to administer the system, such as user contact details. The management of this information is compliant with the European General Data Protection Regulation (GDPR).
<b>DATA SECURITY</b>	Linx will provide you with information about the data that is transmitted from the printer, guarantees its commercial confidentiality and promises that it will only be used to identify and resolve problems and to improve the Linx products and their usage.
	AWS operates a shared responsible security model. They take responsibility for the security of its infrastructure including protecting its computing, storage, networking and database services against intrusion. They are responsible for the security of the software, hardware and physical facilities that host AWS services. However, Linx is responsible for ensuring that their AWS environment is configured securely, and that data collected is managed in a manner in accordance with local governance policies.
	Linx uses industry standard cloud computing services, which are ISO 27001:2013 and Safe Harbor certified and SSAE 16/SOC 2 audited, managed by staff who are Certified Information Security Professionals (CISSP <sup>®</sup> ). These services are subject to network and application vulnerability tests and periodic internal and external security audits.

**Global Sales**  
+44 (0)1480 302100  
sales@linxglobal.com

**UK Sales**  
+44 (0)1480 775 223  
uksales@linx.co.uk

**France Sales**  
+33 1 72 07 17 05  
info@linx.fr

**China Sales**  
021-80504700  
chinasales@linxglobal.com

